



**Website** - [UKSSN Operations Group](#)

**LinkedIn** - [\(3\) UK Schools Sustainability Network Operations Group | Groups | LinkedIn](#)

*We live in a “throw away” culture — from clothing to coffee cups. But nothing we produce is ever truly gone. It either returns to nature or pollutes. The fast fashion industry, driven by low costs and quick trends, shows how the planet pays the price — from overflowing landfills, water use and chemical run-off to climate-altering carbon emissions and microplastics.*

- **David Suzuki Foundation**

Stories to spark conversation, fresh ideas, signposts to support services, a wealth of CPD and events, and 🌱🌱🌱 ...grab yourself a ☕ and enjoy ❤️.

For your Climate Action Plan this week:

- **Nature** - Wilding activities and managing your site over summer
- **Climate Majority Project** - Launch
- **Waste** - Plastic Free July
- **Finance** - Funding decarbonisation
- **Adaptation** - Climate Resilience
- **Energy** - planning for 2025/26
- **Procurement** - Supply Chain School 'Heat Mapping'
- **Catering** - Food Inflation

## **Stories to share this week**

### **Leading English schools at a time of Climate Crisis**

Higham, R., Kitson, A., & Sharp, S. (2025). 'What do I do? Save the environment or let children go hungry?' Leading English schools at time of climate crisis. *International Journal of Leadership in Education*, 1–19. <https://doi.org/10.1080/13603124.2025.2472393>

Recently published research from UCL on school leadership in a time of climate crisis shows how headteachers recognise the importance of climate change and sustainability education and feel a moral responsibility to do more – but many feel powerless to prioritise this over other pressing aims, leaving them frustrated and disheartened.

The paper calls for:

1. A revision of policy frameworks, including NPQs, to incentivize and integrate these issues in schools, and

2. The development of sustainability-focused school networks to help heads feel connected and well-resourced.

Short blog - [Leading English schools at a time of climate crisis | UCL IOE Blog](#)

Full paper - [Full article: 'What do I do? Save the environment or let children go hungry?' Leading English schools at time of climate crisis](#)

The UCL paper has echos of feedback and survey results we have received over a number of years (example paper attached). There isn't an ideological barrier we need to overcome - most leaders would like to act; rather it is how to effect real change when knowledge, skill and resource are in such limited supply.

Barriers	Enablers
<p><b>Constrictive accountability structures</b></p> <p>There are no references to CCSE in the School Inspection Framework in England (Ofsted, 2024) deprioritizes leaders' focus on sustainability.</p>	<p><b>Climate change as a moral imperative</b></p> <p>There is conclusive and compelling evidence that human actions are causing a rise in the earth's temperature which could have significant effects on the lives of our young people (IPCC, 2023).</p>
<p><b>Limited curriculum opportunities</b></p> <p>There are currently very limited explicit references to CCSE in the school curriculum in England (Department for Education (DfE 2014; Greer &amp; Glackin, 2021) and no encouragement to make cross-curricular links.</p>	<p><b>Pressure from students and parents</b></p> <p>There is evidence that young people are dissatisfied with the amount of education their receive about climate change and sustainability (see for example Gillow et al., 2022). There is also evidence that parents see climate change as a priority area for education and that schools are the best place to provide this (Gillow et al., 2022).</p>
<p><b>No compulsory training</b></p> <p>There are no references to CCSE in the National Professional Qualifications for school leadership in England (DfE, n.d.), nor in other professional development frameworks including Initial Teacher Training and Early Career Framework (Department for Education, 2024).</p>	<p><b>Policy shifts</b></p> <p>The Department for Education's Sustainability and Climate Change Strategy Department for Education (DfE, 2022/2023) was the first of its kind in England, and a recognition that CCSE is a legitimate focus for schools.</p>

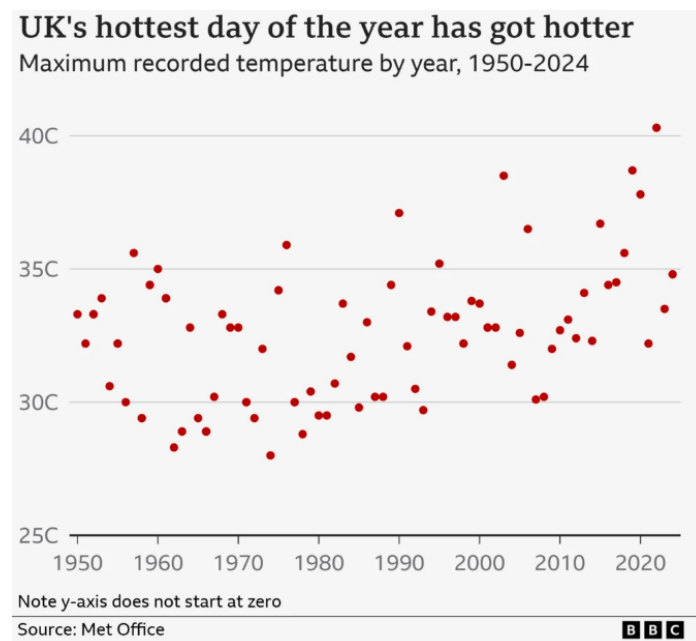
## Heatwaves and Heat Domes

May's global average surface air temperature of 15.79C was the second highest ever recorded for the month, 0.12C cooler than the record of 2024, and 0.06C warmer than the third warmest of 2020. There has been widespread media coverage of the heatwaves hitting the northern hemisphere. Temperatures passed 40C as so-called heat domes – a phenomenon that occurs when a high-pressure system traps heat - formed in several areas.

- USA: Temperatures in New York City reached 100F (38C) for the first time since 2013, as a heat dome “crushed” the eastern side of the US, reported the Associated Press.
- Greece: More than 400 firefighters have been fighting wildfires on Chios, with evacuation orders in place across the island, reported Reuters. Strong winds and 40C temperatures have made the fire “extremely difficult to control” amidst Greece’s first heatwave of the summer.
- Japan: Currently facing a two-week heatwave, driving up energy demand and keeping power prices high, reported Bloomberg.
- UK: The UK Health Security Agency had “activated the five-day alert amid concerns that there could be 'a rise in deaths, particularly among those ages 65 and over or with health conditions'.


Italy limited work outdoors, **France shut schools** and Turkey is battling wildfires. Spain confirmed its hottest June on record

Climate scientist Michael Mann said, "dual heat domes in both Europe and North America were likely to become more common as we continue to heat the planet." New research published in Scientific America links our rapidly warming Arctic and long-lasting summer extremes, such as this month's sweltering temperatures. [Heat Domes Are Hotter and Lingering Longer—Because of the Arctic | Scientific American](#)



## Ideas for Climate Action this week

### **Wilding activities for the summer holidays**

A forest area equivalent to the size of the Isle of Wight has not been planted because UK governments have failed to meet tree-planting goals since 2020, according to Carbon Brief .

### [Summer Unleashed: Wildling Activities to Try Over the Holidays | Green Schools Revolution](#)

As summer kicks off, it's the perfect time to get outdoors and help out local wildlife (even on the not-so-sunny days). Rewilding allows nature to take care of itself by bringing back native plants, animals, and natural processes to a level before human involvement. Wilding activities are all about exploring the outdoors, discovering the natural world, and learning through creativity and adventure. It helps students build confidence, teamwork, and a lifelong appreciation for the nature around them and how they can support it.

#### **Plus:**

As the end of term approaches, it's time to think about practical ways to keep your habitats healthy over the summer. National Education Nature Park has published '**Five ways to look after your site over the summer holidays**' - [Five ways to look after your site over the summer holidays | Education Nature Park](#)

Find out how the Nature Park five-step cycle and [free quality-assured activities and resources](#) can support each pillar of our Climate Action Plan - [Supporting Climate Action Plans | Education Nature Park](#)

The Nature Park team are also running a webinar at the end of the academic year for a celebration of everything that's happened with the National Education Nature Park programme this year! Hear about the impact it's having on schools taking part, what Nature Park scientists have been discovering with the data being collected and look ahead to our plans for next year. [Microsoft Virtual Events Powered by Teams](#)

#### **Plus:**

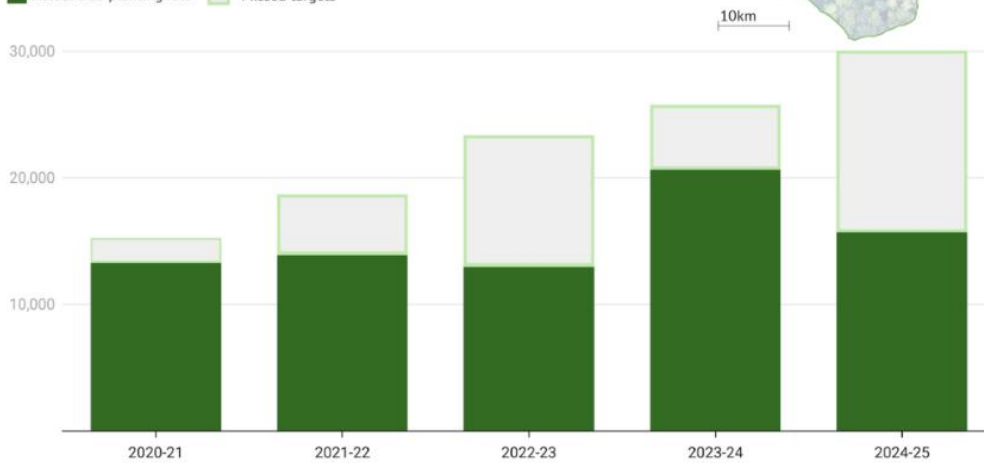
<https://tinyurl.com/2z46rz7h>

The DfE has commissioned independent evaluators, Ecorys UK, to evaluate the National Education Nature Park Programme. The research will assess how the programme is delivered in education settings, how it is experienced by staff and children and young people and will gather feedback and valuable learning to help shape the future of the programme. The survey takes less than 15 minutes to complete, with only 1 response needed from each school/education setting, ideally from the lead teacher for the Nature Park programme. The survey is open until Friday 18th July.

## The UK missed its tree-planting targets by 36,429 hectares – an area the size of the Isle of Wight

Tree-planting targets vs reality, hectares

■ Actual tree-planting rate ■ Missed targets



Source: Forest Research, UK government targets

CarbonBrief  
CLIMATE ACTION

UK-wide tree-planting compared to the combined annual goals set out by Scotland, England, Wales and Northern Ireland. Source: Forest Research, targets set for Scotland, England, Wales and Northern Ireland.

## 🚀 Climate Majority Project - Launch 🚀

Last week, the Climate Courage Schools campaign launched – a call for emotionally aware, future-ready climate education in every school. The launch event brought together 150 teachers, students, psychologists, researchers, campaigners and policymakers. Their report lays out four calls to the Department for Education, spotlights some of the individual schools, teachers and organisations revolutionising how you teach young people about the climate and nature crisis in an honest, emotionally attuned and empowering way, and details how you can get involved.

## Explore the campaign

Watch the event - <https://www.youtube.com/watch?v=Y6ZwCO5dyc8&feature=youtu.be>

Read the report (PDF) - [Climate-Courage-Schools-mini-report-June-2025-1.pdf](#)

Visit their new webpage - [Climate Courage Schools - Climate Majority Project](#)

🎓 On July 16th Heena Dave and Leigh Hoath from Climate Adapted Pathways for Education (CAPE), will be presenting their evidence-informed curriculum for climate change and environmental education in schools: [Book your place – Climate Courage: stories from the classroom - July 2025 – Zoom](#) 🎓

## **Waste: Plastic Free July**

### Plastic Free July – Be Part of the Plastic Pollution Solution

Only 9% of the plastic that has been produced has been properly recycled. The rest ends up in our landfills and oceans for centuries and emits greenhouse gases as it breaks down. One of the main contributors to this is single use plastics.

Fossil fuels are needed to make plastic and at a time when reliance on fossil fuels needs to be decreasing, our demand for plastic (and thus fossil fuels) is increasing. Plastics could account for [20 percent of oil consumption by 2050](#), according to The Center for International Environmental Law.

Plastic Free July™ is a global movement that helps millions of people be part of the solution to plastic pollution – so we can have cleaner streets, oceans, and beautiful communities. Will you be part of Plastic Free July by pledging to refuse single-use plastics? Is going plastic-free on your Climate Action Plan for September?

Here is some of what can you do at school - [At school - Plastic Free July](#)

## **Finance - Funding Decarbonisation**

The latest APSE funding opportunities list for June has been published - pdf attached. Not all of the funding will be relevant to your school or Trust, but I hope one or two could be useful in helping to progress your Climate Action Plan.

## **Adaptation: Climate Resilience**

### Resilience Roadmap | UKGBC

The UK's built environment is facing an urgent reality: climate hazards are no longer future threats but immediate dangers. There is no climate resilience without a climate-resilient built environment. The UK Climate Resilience Roadmap is more than a call to action. It is a robust, evidence-backed strategy for adapting to climate hazards, equipping stakeholders across the built environment with the tools needed to achieve long-term resilience. In the most recent independent assessment of UK climate risk ([Independent Assessment of UK Climate Risk - Climate Change Committee](#)), over 60% were given the highest urgency score, a staggering increase in urgency compared to the earlier assessment. Destructive climate impacts and extreme weather changes will affect all members of our society, devastate lives and livelihoods, and have a detrimental impact on the buildings, infrastructure and environments that keep us secure from climate-related hazards.

The roadmap contains a range of recommendations for preparing for climate hazards, preparing your strategy, and sustaining resilience.



## ⚡ Energy - Planning for 2025/26 ⚡

### Energy Sparks

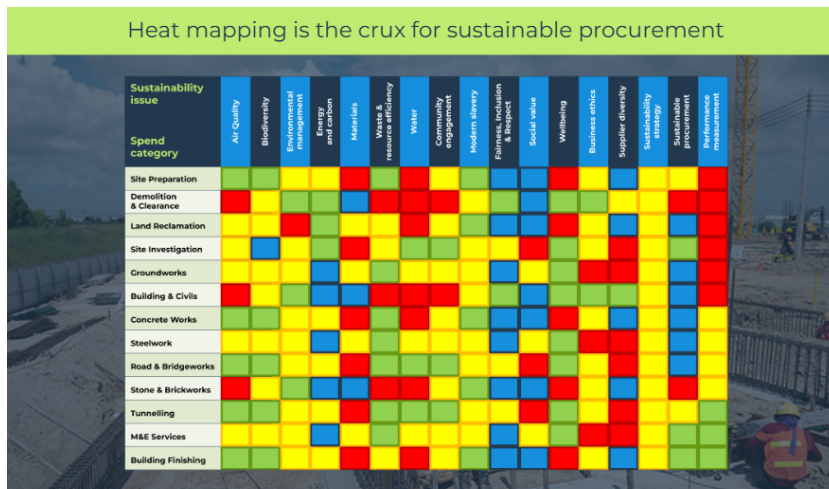
According to Energy Sparks, last year their average primary school spent £1,400 on energy during the summer holidays and the average secondary school spent over £10,000. Plan ahead and create a holiday switch off - [Energy Sparks](#)

If you are interested in utilising Energy Sparks as part of your 2025/26 Climate Action Plan, why not book a training session this term and plan how to get the most out of their platform and resources - [Training | Energy Sparks](#).

## 🛒 Sustainability Support - 'Heat Mapping' for sustainable procurement 🛒

### Personal Learning Space: Paul Edmond: Heat Mapping: How to prioritise your impacts | Supply Chain Sustainability School

Up to 80% of a school or Trust carbon footprint can be found in the goods or services it procures. One of the first steps in managing our supply chain for sustainable outcomes is 'heat-mapping' - identifying the risks and opportunities that exist in our supply chain so we can target our time and resource most effectively. Supply Chain School has a useful (and free) CPD programme to help us prioritise our impact.



and is a pivotal starting point for developing business strategies through mitigating risks and seizing opportunities to become more sustainable.

## 🐮 Catering - Food Inflation 🐮

### allmanhall Foodsight Summer 2025 by allmanhall - Issuu

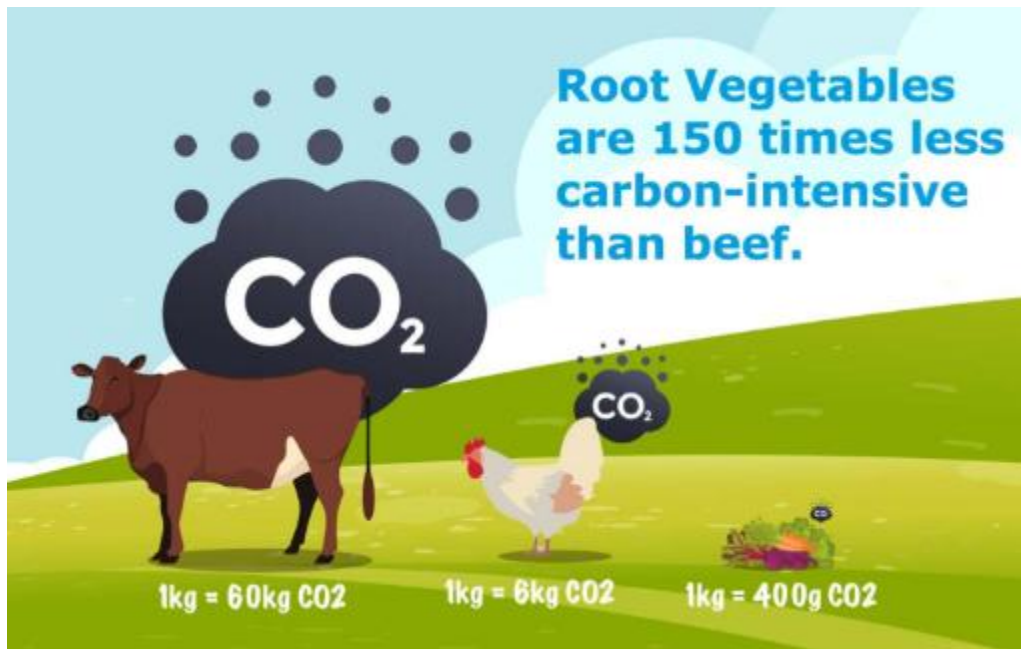
Food inflation rose to 4.4% in May:

- Beef prices have increased considerably in the short-term and unlikely to fall back down
- Milk and butter prices have risen
- Salmon prices are volatile and cod prices are up 30% year-on-year
- Poultry and egg prices are rising, eggs are up 20% year-on-year

These foods are damaging our planet and our school budgets. In 2019, the EAT-Lancet Commission report ([The EAT-Lancet Commission on Food, Planet, Health - EAT Knowledge](#)) was published to answer the question of “Can we feed a future population of 10 billion people a healthy diet within planetary boundaries?” The short answer? Yes we can. But it is a little more complicated than that, and it will involve reducing food waste, changing eating habits and improving food production.

Is adapting your menu and ingredients part of your Climate Action Plan for 2025/26?





**Plus:**

Around 7% of fruit and vegetables grown in the UK never make it onto a plate. Waste Knot works with farmers, caterers and schools to reduce food waste ([General 2 — Waste Knot](#)):

*Whether it be a restaurant, a community cafe, a school, an office, or a pub, all the chefs we work with have the same ethos at heart; to source the produce that they cook with sustainably. An inherent drive to work with nature, to close the gap between grower and consumer and to ultimately do the right thing by the environment and the planet all lead our chefs to engage with us and the wider agricultural industry.*

## **Support Services: Where to turn for help**

### **Sustainability Support Hub - [Action for Climate by Sustainability Support for Education](#)**

Sustainability Support for Education are holding more Action for Climate webinars in July.

- Identify key actions for your plan
- Engage the right colleagues
- Access expert resources for successful implementation

### **National Education Nature Park - [Home | Education Nature Park](#)**

Join the National Education Nature Park and explore the habitats in your school, nursery, or college site. Whether you are new to the programme or already involved, exploring local habitats is a fantastic way for students to connect with nature, develop essential skills and dive into scientific research. Register today and kickstart your adventure with our [Habitat Heroes activity](#). Already involved? [Time to map your site!](#) Create a baseline for improving your outdoor spaces and track the difference you're making for both people and wildlife.

### **Let's Go Zero - [Climate Action Advisors - Lets Go Zero](#)**

One simple step we can all take is to sign up and engage your local (& free!) LGZ Climate Advisor. Let's Go Zero are also offering Carbon Literacy courses, a key part of your CPD plan for climate action -

- **Carbon Literacy - [Free Carbon Literacy training from Let's Go Zero](#)**

**Change Agents UK** also runs regular Carbon Literacy courses, a crucial step in everyone's Climate Action Plan - [Change Agents UK Events - 7 Upcoming Activities and Tickets | Eventbrite](#)

### **Climate Ambassadors - [Contact us & get involved | Climate Ambassadors](#)**

Stephen Morgan MP said: "The Climate Ambassadors programme is a vital part of our strategy to empower schools and educators in tackling the climate crisis, and I'm proud to be joining over 1,000 volunteers to support schools in developing and delivering their climate action plans."

### **Count Your Carbon - [Home - Count Your Carbon](#)**

Count Your Carbon is the nation's first free, full-scope carbon emissions calculator, built for – and in collaboration with – nurseries, schools, and colleges. It supports educational settings to calculate, understand, reduce and track your carbon emissions.

**PLUS:**

### **Waterwise – [Water Literacy | Accredited Learning Experience](#)**

With growing pressure on water supplies, learn more about why water management is a critical part of an effective Climate Action Plan:

### **Blue Marble (New) - [Sustainable schools & trusts - start today with a Climate Action Plan - Blue Marble](#)**

Blue Marble recently released a new Climate Action Plan tool for schools. According to their website the CAP tool is free for schools, designed to quickly and easily create a plan that unlocks meaningful action.

### **Greener Schools Index - [Greener Schools Index](#)**

The GSI is a free tool self-assessment tool designed to support all schools, however big or small, and at whatever stage they are on their net zero journey. The second phase of GSI is now open and will help you assess your current level of climate action and find areas for further development. Give it a try...it is free and a particularly useful planning tool.

### **Carbon Literacy Project [Carbon Literacy Action Day - The Carbon Literacy Project](#)**

The Carbon Literacy project has developed a new Toolkit Course for School Staff to support governors, leadership, teachers, and volunteers to develop their understanding and confidence around climate education, action, and leadership. This can be passed on, building up that learning in their school community; creating a movement of action which is relevant, helpful and practical, and that will show huge benefits for themselves, their school community and of course, the planet.

Plan ahead for **Carbon Literacy Action Day** – on the 13th November 2025. Coinciding with the UN COP30 Climate Change Conference, the annual International Action Day is the biggest climate education-and-action training event of its kind and offers the perfect opportunity to jumpstart your Carbon Literacy training programme and demonstrate your school's climate leadership. Find out more and register your interest.

## 🎓 CPD and Events 🎓

### 🌍 **NEW: ISBL Sustainability Symposium (30h September 2025, Millenium Point, Birmingham)**

With sustainability rising to the top of the national education agenda, 2025 is a critical year for school business professionals to take action. From meeting decarbonisation goals and reducing operational emissions to embedding climate literacy and securing sustainable funding — your leadership is key to driving meaningful change. That's why we're inviting you to attend the ISBL Sustainability Symposium — a focused, one-day event designed to equip you with the strategies, tools, and confidence to lead your school's sustainability journey with purpose.

The **ISBL Sustainability Symposium** is your opportunity to take meaningful steps toward a more sustainable future for your school. This one-day event brings together school business professionals, sustainability experts, and education leaders to explore practical strategies, share success stories, and build confidence in climate leadership.



### 🌍 **NEW: Empowering schools towards a sustainable future (Thursday 27 November 2025 | Sandy Park, Exeter) - [Sustainability conference: Empowering schools towards a sustainable future | DES](#)** 🌍

Timed to align with the appointment of your school's sustainability lead and support them with their journey to creating and implementing a climate action plan, this event will focus on growing an understanding of climate adaptation and how it relates to schools. This conference will share invaluable insights and practical tools for making your school more

sustainable - sharing initiatives that not only help the environment but also save your school money and reduce its carbon footprint.

If you are planning an event for the new year let us know and we will share with colleagues in the network.

**Plus...**

Don't forget there are other useful (& sometimes free) training opportunities to help progress your Climate Action Plan, including:

- [Home - Supply Chain Sustainability School](#)
- [Free Online Environmental Sustainability Training Course with Certificate](#)
- [IEMA - Training](#)
- [8-week, cohort-based programmes | Cambridge Institute for Sustainability Leadership \(CISL\)](#)

If you are aware of other high-quality courses, please let us know and we will add to our growing list 🙌

## 👕 And finally...fast fashion 👕

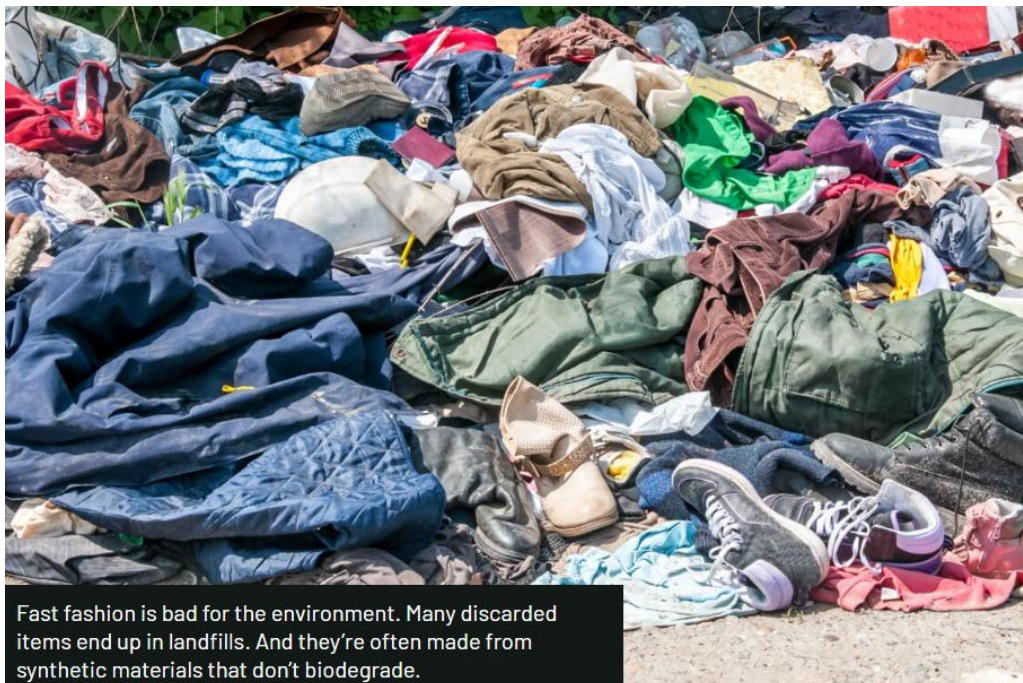
### [Emissions of Fast Fashion Giant Shein Balloon in 2024 | Earth.Org](#)

Shein, the rapidly-growing Chinese giant recently ranked among the worst fast fashion companies for emissions reduction and sustainability efforts and as the top polluting retailer. Currently valued at \$30 billion, Shein has long been at the center of criticism regarding its labor practices and environmental impact. The company has become a prominent example of the [fast fashion model](#), known for its rapid manufacturing and distribution cycle of clothing, low prices, and extensive use of social media marketing strategies.

According to Yale Climate Connections estimates, a new Shein design may take as little as 10 days to become a garment, with up to 10,000 items added to the site each day and as many as [600,000 items](#) for sale at any given time at an average price tag of \$10.

The UN Environment Programme (UNEP) estimates that the fashion industry consumes the second-largest amount of water, behind the agriculture industry, using 93 billion cubic metres of water each year. In addition to water usage, the industry is responsible for at least 20% of wastewater worldwide, 8-10% of global carbon emissions and 35% of primary microplastics in the ocean.

### [The environmental costs of fast fashion - David Suzuki Foundation](#)



Fast fashion is bad for the environment. Many discarded items end up in landfills. And they're often made from synthetic materials that don't biodegrade.

We can all make a difference by choosing to shop at businesses that make long-lasting clothing, repurpose old fabrics whenever possible, and slow the high turnover of our closets that has become such common practice.



Have a great weekend 

## Other recommended sources of advice and support

1. DfE sustainability hub: [Sustainability Support for Education](#) (with updated features for 2025 and updates in [LinkedIn](#))
2. UKSSN: [UKSSN Operations Group](#)
3. Education Nature Park: [Home | Education Nature Park](#)
4. Climate Ambassadors: [Climate Ambassadors: Turning Climate Ambition into Climate Action in Education | Climate Ambassadors](#)
5. Let's Go Zero: [UK Climate Change • Let's Go Zero](#)
6. EAUC: [The Platform - Environmental Association for Universities and Colleges, EAUC - United Kingdom](#)
7. FED: [FED | Climate Change](#)
8. Good Estate Management for Schools - [Good estate management for schools - Guidance - GOV.UK](#)
9. Sustainable Drainage (SUDS) - [Susdrain - The community for sustainable drainage](#)
10. The Trust Network (TTN) - [The Trust Network supporting good school estates & facilities management](#)
11. Salix - [Project delivery: support and guidance](#)
12. Count Your Carbon (Eco Schools) - [Home - Count Your Carbon](#)

## Other useful references

### HM Government Net Zero Strategy (October 2021, page 29)

'Government is leading the way – embedding climate into our policy and spending decisions, increasing the transparency of our progress on climate goals, and providing funding to drive ambitious emissions reductions in schools and hospitals.'

<https://assets.publishing.service.gov.uk/media/6194dfa4d3bf7f0555071b1b/net-zero-strategy-beis.pdf>

### Department for Education Sustainability and Climate Change Strategy (April 2022)

[Sustainability and climate change strategy - GOV.UK](#)

### Streamlined Energy and Carbon Reporting (SECR)

[Environmental reporting guidelines: including Streamlined Energy and Carbon Reporting requirements - GOV.UK](#)