The background features a repeating pattern of light green circles. Overlaid on this are several thick, curved lines in a vibrant yellow-green color. A large, semi-transparent grey circle is centered in the upper half of the page, serving as a backdrop for the main title.

Circular Tools

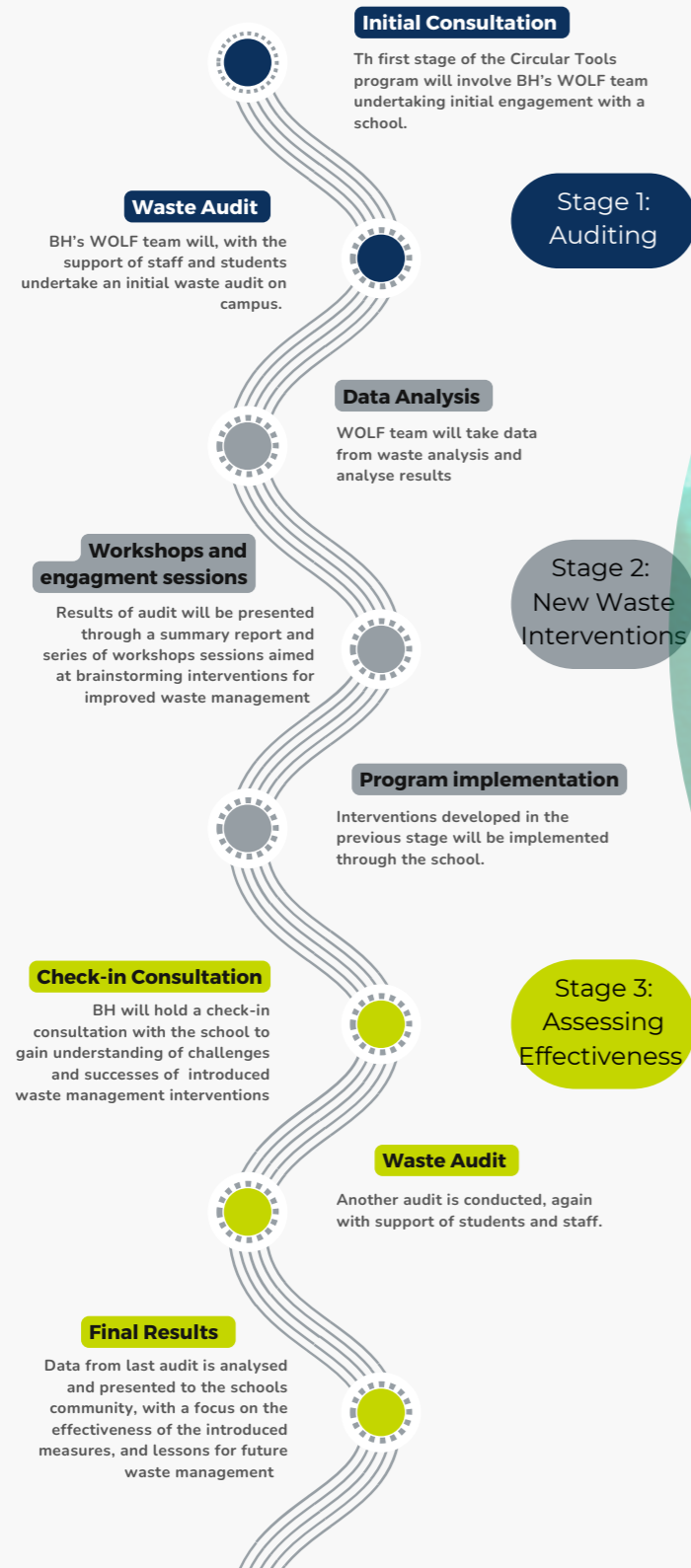
**Collaborative circular waste intervention
development for local secondary school**

BURO HAPPOLD

Who are we?

Buro Happold is an international engineering firm that delivers creative, building and city **solutions for an ever-changing world**. The waste, operations, logistics and flows group work with designers and operators to deliver **efficient, sustainable and future-proofed waste and logistics solutions**.

Project Timeline



BURO HAPPOLD

Project Brief

Buro Happold's Waste & Logistics Team aims to collaborate with a local school to establish a more circular waste management system. The project involves auditing current waste management processes, identifying improvement opportunities, and implementing interventions through workshops and community engagement.

Led by Buro Happold's Waste & Logistics Team, the project will engage teachers, students, and facility management staff to empower the school community in enhancing waste management practices. **Our expertise will support the school with recommendations to reduce waste generation, improve diversion rate, reduce contamination, and potentially cut operational costs.**

Benefits of the Circular Tools project

There are several benefits for the schools community that are expected to come out of this project, some of which being:

- An overall **reduction in operational waste** of the school, leading to positive environmental and financial benefits
- The opportunity for **experiential learning** for students
- Further cultivation of **community engagement and leadership development** among students; and
- An overall contribution to the development of **environmental literacy**, empowering students to make informed and responsible choices.